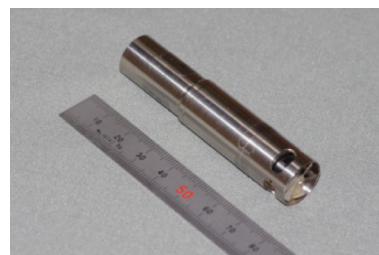


Key features

- Self-contained acceleration in 3D, speed, conductivity, depth and temperature recorder designed for use on aquatic organisms
- Compact size
- Re-usable (a field replaceable battery)
- Depth trigger
- Programmable start time



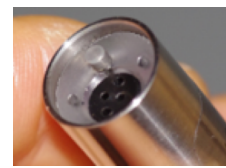
ORI400-PD3GTC

Examples of Application

- The PD3GTC can be used to study underwater behavior, kinematics, biomechanics and diving physiology of the tagged animal especially for small fishes and birds.
- Since the logger provides environmental information (salinity and temperature) and behavioral data of a tagged animal simultaneously, it is most suitable to investigate physiology in relation to migration behavior.



Propeller for speed



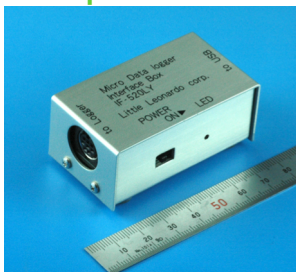
Conductivity sensor

Technical Specifications	
Sensors	3 axis acceleration, temperature, pressure (depth), speed, conductivity
Size (Diameter × length)	16 mm × 74 mm
Housing material	Titanium
Weight (in air)	29 g (including battery)
Recording duration	18 hours (3-axis acceleration 10ms; Others 1s)
	180 hours (3-axis acceleration 100ms; Others 1s)
	13 days (3 axis acceleration OFF; Others 1s)
Memory	256 Mbit
Memory Capacity	6 million data in total
Depth range	0-400 m
Depth resolution	0.2 m
Range of 3-axis acceleration	± 3g
Resolution of 3-axis acceleration	± 0.01 g

Temperature range	-10~50°C
Temperature resolution	0.1°C
Time constant (Response time temperature reached 63%)	< 10 s
Speed range	0.2 ~ 5 m/s
Speed resolution	0.03 m/s
Salinity range	0~40 ‰
Salinity resolution	0.5‰
Clock	User manual setting Accuracy: ± Several seconds / day
Sampling Interval (User selection)	3 axis acceleration (10, 20, 50, 100 ms)
	Others (1, 2, 5, 10, 30, 60 s)
Delay timer (User selection)	0-96 hours
Communication	Via an interface box with a logger cable
Battery	SR936W × 3

Related products
Interface box (Model IF-520LY)
logger cable (Model IL-ORI4)
Software (Salinity logger tools)

Related products



Interface Box IF-520 LY



Logger Cable
IL-ORI4

Specifications are subject to change with or without notice.

Little Leonardo Corporation

Asahishoten Bldg. 3F, 4-4, Honkomagome 1-chome, Bunkyo-Ku, Tokyo 113-0021 JAPAN
Tel +81 3 3946 2410; Fax +81 3 5395 1676; e-mail : dofleo@l-leo.com

ORI400-PD3GTC201603cat